

ABLTf

abrdn Long Term Equity Fund

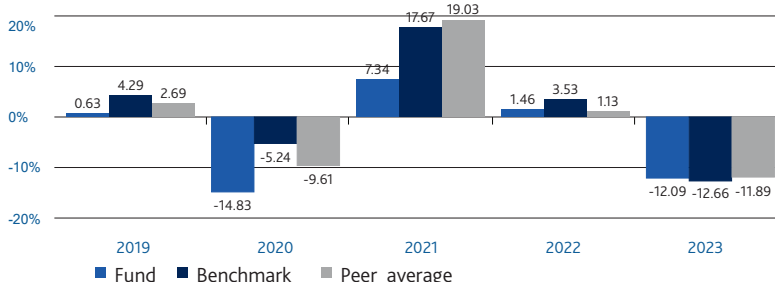
Fund Type / Fund Group

- Equity Fund
- LTF
- Equity General group

Investment Policy

- The Fund will invest in equity or equity related securities or assets of listed companies, at least 65% of its NAV , in average, in any accounting period.
- The fund will emphasize on investing in good fundamental instruments whereby the rest will be invested in securities or other assets or investing for profit by other means in accordance with the notifications of the SEC or the Office of the SEC whereas the net exposure in equity instruments shall not be less than 65% of its NAV , in average, in any accounting period.
- The fund aims to outperform the benchmark.

Calendar year performance (%pa)



Performance (Annualized return for the period from 1 year)

	YTD	3 mths	6 mths	1 yr
Fund	-2.08	-2.08	-5.73	-9.98
Benchmark	-1.62	-1.62	-5.00	-11.68
Average	-1.80	-1.80	-5.68	-10.01
Fund SD	9.49	9.49	10.89	10.79
Benchmark SD	9.99	9.99	11.64	11.28

	3yrs	5 yrs	10 yrs	Since Inception
Fund	-4.66	-5.33	-0.77	7.19
Benchmark	-1.86	-0.46	3.27	8.30
Average	-2.88	-1.49	1.62	
Fund SD	10.96	16.77	13.95	15.94
Benchmark SD	11.28	16.69	14.42	18.43

Risk Level



High Risk

Invest in equity with net exposure at least 65% of its NAV ,in average, in any accounting period

Fund Information

Registration Date	28/10/2004
Class Launched Date	28/10/2004
Dividend policy	No dividend payout
Fund Duration	Indefinite

Fund Manager

- Ms. Darunrat Piyayodilokchai (01/12/2021)
- Ms. Duangthida Sae-Tae (18/10/2021)

Benchmark

SET TRI 100.00%
The benchmark is used for performance comparison.

Disclaimer

- Investing in investment units is not a money deposit.
- Past performance/ Performance comparison relating to a capital market product is not a guarantee of future results.

Anti Corruption	Under supervision by the parent company to comply with law
-----------------	--

Prospectus

Investor should study liquidity risk management tools from the full prospectus.



<https://www.abrdn.com/en-th/investor/fund-centre/fund-literature>

Subscription

Subscription period	Every business day
Subscription time	9.00am - 3.30pm
Initial subscription	1,000 THB
Subsequent subscription	1,000 THB

Redemption

Redemption period	Every business day
Redemption time	9.00am - 1.00pm
Minimum redemption	0 THB
Minimum balance	0 THB
Minimum unit	0
Redemption Settle date	T+2 is 2 working day from redemption order date

Statistic Information

Maximum Drawdown	-43.80%
Recovering Period	n/a
Sharpe Ratio	-0.04
Alpha	-3.33
Beta	0.90
Portfolio Turnover	22.10%

Remark : Portfolio Turnover as of 28 Dec 2023

Remark

The Asset Management Company will only accept the minimum redemption unit under 100.0000 units or the minimum balance unit under 100.0000 units if the investors wish to maximise their tax deductible allowance or in any other cases deemed appropriate by the Asset Management Company.

Country allocation (%)

Thailand	100.00
----------	--------

Fund' fees and charges (% of NAV pa/Include VAT)

Fee	Maximum	Actual
Management fee	1.8725	1.8725
Total expenses	2.6750	2.0400

Remark
Sector allocation/Sector allocation of Master fund(%)

Commerce	17.52
Energy & Utilities	13.20
Property Development	12.64
Transportation & Logistics	10.12
Tourism & Leisure	9.63

Unitholder's fees (% of the unit price)

Fee	Maximum	Actual
Front-end fee	0.00	0.00
Back-end fee	1.00	0.25
Switch in fee	0.00	0.00
Switch out fee	0.05	0.05
Transfer fee	0.00	0.00

Remark

- Back-end fee : Charge 0.25% except in the case of switching-out to other asset management companies, 1% will be charged instead
- In case of switching within asset management company unitholders must pay for back-end fee 0.20% and switch-out fee 0.05%
- In case of switching-out to other asset management companies, no switching-out fee but back-end fee of 1% will be applied

Asset Type Breakdown(%)

Equity	97.08
Cash and Others	2.92

Top 5 Holdings(%)

CP ALL PCL	6.97
Airports of Thailand PCL	6.27
WHA Corporation PCL	6.00
Advanced Info Service PCL	5.93
Minor International PCL	4.53

Invest in the other funds more than 20% (Domestic or Foreign Funds)

Fund name	N/A	web link
Fund name	N/A	web link
Fund name	N/A	ISIN code
		Bloomberg code
Fund name	N/A	ISIN code
		Bloomberg code

Disclaimer

Maximum Drawdown : The percentage of the fund's maximum loss in the past 5 years (or since the fund's inception if it is launched for less than 5 years) which is measured from the highest NAV per unit to the lowest NAV per unit during such period. Maximum Drawdown is an indicator of the risk of loss from investing in the fund.

Recovering Period : The length of time that the fund takes in recovering from the point of maximum loss to earning back the initial investment.

FX Hedging : The percentage of foreign currency investment with FX hedging.

Portfolio Turnover Ratio : The frequency of securities trading in the fund portfolio over a certain period, calculated by taking the lower value between the sum of the value of securities purchased and the sum of the value of securities sold of the fund in 1 year period divided by the average NAV in the same period. A fund with high Portfolio Turnover Ratio indicates frequent securities trading by fund manager resulting in high trading costs. Therefore, it is necessary to compare with the performance of the fund in order to assess the worthiness of such securities trading.

Sharpe Ratio : A ratio between the excess return of a fund and the risk of investment. The Sharpe ratio reveals the average investment return, minus the risk-free rate of return, divided by the standard deviation of returns for the fund. The Sharpe ratio reflects the extra return that should be received by the fund to compensate the amount of risk taken in investment. The fund with a higher Sharpe ratio is considered superior to other funds in terms of management efficiency since it provides higher excess return under the same risk level.

Alpha : The excess return of a fund relative to the return of a benchmark index. A fund with high alpha indicates that it is able to beat the performance of its corresponding benchmark which is a result of the capabilities of the fund manager in selecting appropriate securities for investment or making investment in a timely manner.

Beta : A measure of the degree and direction of volatility of the rate of return of assets in the investment portfolio of the fund compared to the changes in the overall market. A beta of less than 1.0 implies that the rate of return of the fund's assets is less volatile than that of the securities in the broader market whereas a beta of greater than 1.0 implies that the rate of return of the fund's assets is more volatile than that of the broader market.

Tracking Error : The efficiency of the fund to imitate its return to benchmark. Low Tracking Error means the fund is effective in generating return close to benchmark. High Tracking Error means the fund generates return more deviate from benchmark.

Yield to Maturity : The rate of return earned on a bond held to maturity, calculated from the interest expected to receive in the future over that bond duration and paid back principal discounted to the present value. It is used to measure return of fixed income funds by calculating the weighted average of Yield to Maturity of each bond that the fund invests. As Yield to Maturity has standard unit in percentage per annum, it can be used to compare the returns between fixed income funds that have an investment policy of holding bonds until maturity and similar investment characteristics.

Contact Us

Aberdeen Asset Management (Thailand) Limited
 Tel 662 352 3388
www.abrdn.com/Thailand
 28th Fl. Bangkok City Tower, 179, South Sathorn
 Road,Thungmahamek, Sathorn, Bangkok 10120